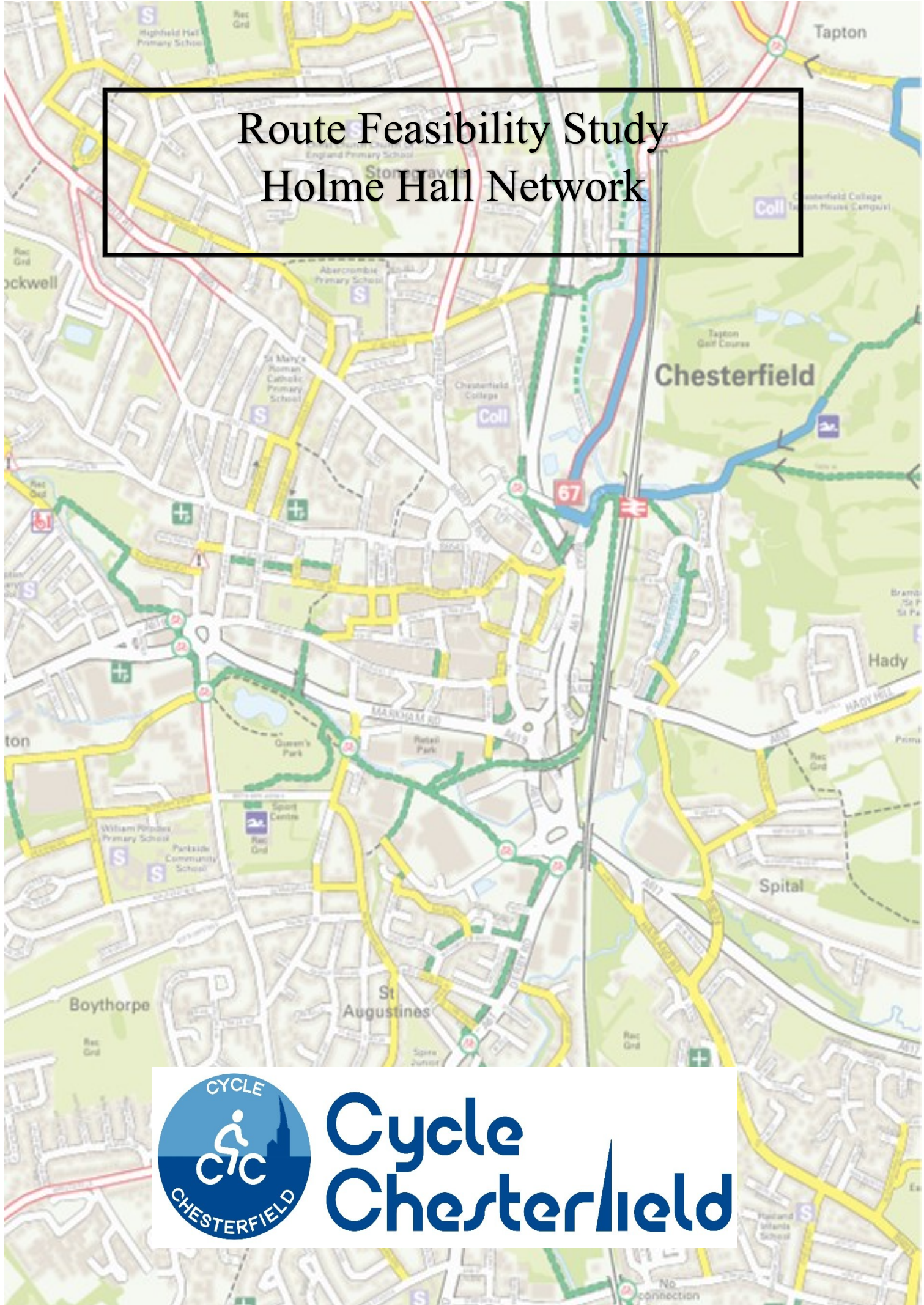


# Route Feasibility Study Holme Hall Network



**Cycle  
Chesterfield**

## Feasibility Study, Chesterfield Holme Hall / Holme Brook Valley Active Travel Improvement Scheme



### The Vision

To create a high quality, direct, safe and accessible multi user active travel route to connect Holme Hall residential areas with local community shops and facilities, including the health centre, local primary school and community open spaces. To link Holme Hall with the wider Chesterfield walking, wheeling and cycling network to enhance opportunities for commuting into town, transport hubs, employment, education and retail opportunities as well as links to leisure (local parks and the Derbyshire countryside). There may be sections of route where routes diverge for walkers and those on wheels. Routes should form continuous cohesive high quality safe active travel corridors

### The Proposal

Holme Hall is a community on the western edge of Chesterfield. It is a mixed community with areas of deprivation and some more affluent areas. It has a large-scale new housing development undergoing construction on its' north western edge. It is served by a local school and a small shopping area with doctor's surgery and dentist.

There is no clearly signposted direct, safe and cohesive route to reach existing walking and cycling corridors into Chesterfield; there is no quality connection to the school; and there is no link from the the new residential development to local facilities / school other than via a circuitous route by car.

The proposal is for:

1. A connection from the new development ("Forest Edge") directly to the local shopping area and school. This would require a link path from the estate, a bridge over a small brook and a short section of multi user trail through a community garden. Chesterfield Borough Council have agreed to use S106 developer funding for most of this element of the scheme.
2. A new connection from the school and shopping area along quiet roads and multi user paths to connect with the wider walking, wheeling and cycling network allowing access into Chesterfield and into Holmebrook Valley Park. This would require new signage, new dropped pavements and some improvements to quiet roads and existing shared use paths to create a clear active travel corridor
3. Improvements to the existing Holme Brook Valley Trail to make this connection into Chesterfield continuous, cohesive, attractive and safe for users. This is a long standing route from Chesterfield town centre via a number of residential areas out to Holmebrook Valley Park on Chesterfield's western edge. There are sections of this route that are unattractive and unsuitable as a multi user trail. Evidence shows that broken, unattractive or unsafe sections of routes discourage use on the entirety of that route.

This map indicates how a number of relatively modest improvements would have the potential to make a significant difference to the travel choices for residents in Holme Hall by connecting the new estate (in pale blue) with the shops and school via a cycle / walking link. A new route for walking and wheeling in blue would use minor roads and some link paths with waymarking to connect into existing routes into town and the Holmebrook Valley Park.



- Existing multi user trails
- Proposed bridge and path from new estate
- Proposed improved footpath to school
- Proposed new cycle and wheeling connection
- Area for multi user trail improvement

## **Scheme Benefits**

- A high quality walking, wheeling and cycling connection from the new Forest Edge residential development direct to local shops, facilities and the school, reducing short local car journeys.
- New safe link route from Holme Hall into Chesterfield town centre, encouraging more sustainable journeys into town, and contributing to reducing congestion and road pollution.
- New safe improved link route through Loundsley Green into Chesterfield town centre, passing Brockwell Primary School encouraging more sustainable journeys into town and to school, and contributing to reducing congestion and road pollution.
- Providing travel choice for residents and visitors alike, with a high quality positive alternative safe journey experience
- Access to employment, education, shopping and facilities by a low cost, sustainable alternative transport choice. Supporting deprived communities with low cost travel option and access to open spaces for leisure, health and well-being
- Providing connections to longer distance routes / places for leisure
- The improvement of this corridor into a high quality, safe and accessible multi user corridor would entail little or no disruption in both installation and use of existing highway infrastructure
- Investment in high quality active travel infrastructure supports increased take up by both existing and new walkers, wheelers and cyclists

## **Key Stakeholders**

### CBC councillors

#### **Linacre**

- Gavin Baldauf-Goid
- Judy Staton

#### **Brockwell**

- Maureen Davenport
- Katherine Hollingworth

### DCC councillors

#### **Spire**

- Ed Fordham

#### **Linacre and Loundsley Green**

- Alex Millward

### Chesterfield Borough Council

### Derbyshire County Council Active Travel Team

### MP Toby Perkins

### Holme Hall Primary School

### Holme Hall Active Community Network

## The Route in Detail

### Forest Edge Residential Development to Local Centre

The Forest Edge development is a new build estate of XXX houses. The main designated vehicle and pedestrian access point onto this estate is via Linacre Road. The bottom edge of the estate is less than 100 metres from the nearest shops and facilities but the single vehicle / pedestrian access point for the estate results in a journey to those facilities of approximately 600 metres via the main Linacre Road. The bottom edge of the estate contains minor roads and cul de sacs close to the boundary with Chesterfield Borough Council land.

Chesterfield Borough Council have agreed to install and fund (using developer S106 funding) a shared use path and bridge over a local brook to connect the bottom edge of the estate with Wardgate Way, subject to the developers, Tilia Homes, installing and paying for a connecting path from their land. An existing pedestrian path to Holme Hall Primary School from the edge of the new development is not included in this funding and would need additional investment to widen and resurface.

The proposed cycle route will enter a minor local road, Wardgate Way. It is proposed that traffic calming measures could be installed at the point that the cycle route joins the carriageway. The cycle route would then continue to the shopping centre via Wardgate Way



Blue – new cycle route

Yellow – new pedestrian route

#### **Improvements**

Bridge and new cycle and walking route to Holme Hall centre

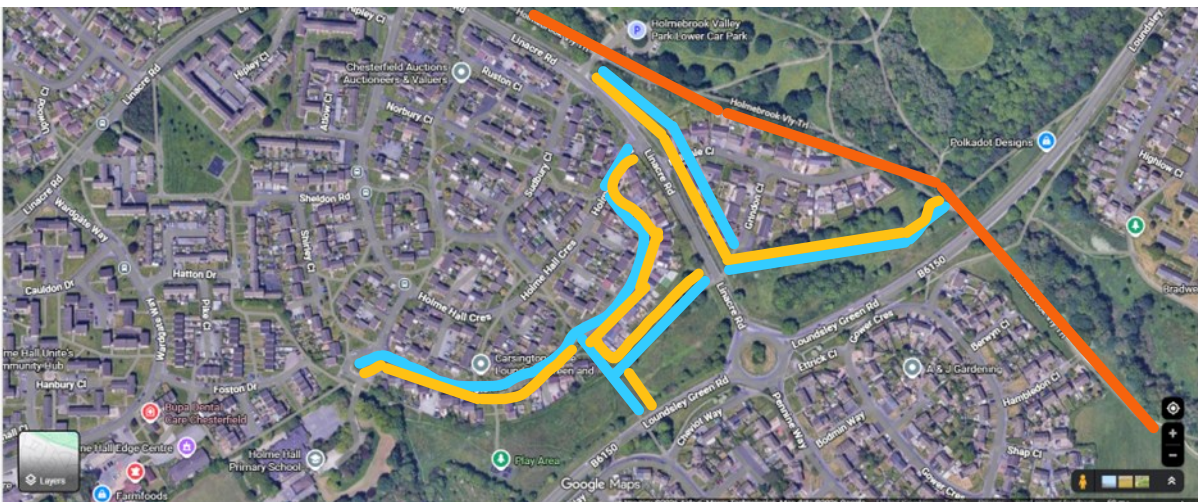
Pedestrian route to Holme Hall school

## Local Centre to Holme Brook Valley Trail

The Holme Hall estate is made up of small residential roads reached from a main spine road, Linacre Road. The multi use trails which connect Holme Hall to Chesterfield and Holmebrook Valley Park are situated to the east and north of the Holme Hall estate. It is therefore, proposed that a continuation cycle route, appropriately signed, runs from Holme Hall shops to the primary school where it would meet up with the pedestrian route before continuing to the Holme Brook Valley Trail and Park.

The cycle route out of Holme Hall centre would use a combination of quiet roads, new dropped kerbs and new short sections of shared use path to the school. From the school the route would use quiet carriageways (for cycles) and existing pavements (for pedestrians). These sections would need appropriate signage and paint markings. Where Carsington Close meets Yeldersley Close, a multi user trail then exists on a grassed area to the west of the estate which links into an underpass towards Chesterfield and separately down to the Holme Brook Valley trail and then into Chesterfield. This multi user path on the west side of the estate which runs down to the Holme Brook Valley Trail has a tarmac surface. This surface is pitted and broken and encroached by grass. It needs resurfacing and re-signing.

An alternative cycle and walking route to go directly to Holme Brook Valley Park using quiet roads and pavements could continue along Yeldersley Close and then Holme Hall Crescent before crossing Linacre Road and entering Holme Brook Valley Park.



Orange - Holme Brook Valley Trail

Blue/Yellow – multi user routes

### Improvements

On road signed cycle route to Holme Hall School

On road signed cycle route to Linacre Road and connection to the park

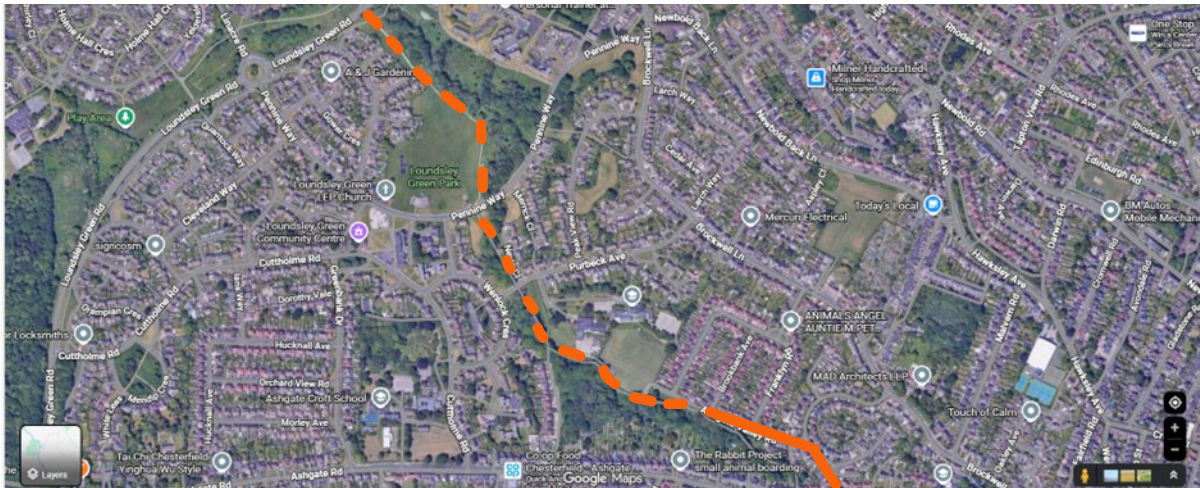
Resurfaced western multi user connection to the Holme Brook Valley Trail

## Holme Brook Valley Trail Improvements

The Holme Brook Valley Trail itself passed underneath Loundsley Green Road towards Chesterfield. The route here crosses Loundsley Green Park and is narrow and muddy which discourages it's use. This should be resurfaced as a multi user trail along with signage and the option of lighting. The route crosses Pennine Way which needs safety improvements before crossing an narrow bridge over a brook. This bridge is unsuitable and needs replacing. The shared tarmac path then continues, before crossing Purbeck Ave next to Brockwell Junior School and then entering approximately 300 metres of overgrown and broken tarmac path to Ashgate Valley Road. This section of path should be widened and improved with signage and potential lighting. The route then exits onto Ashgate Valley Road and crosses Ashgate Road. This section is all on road and would benefit from signage and road markings / warning signs



Section of trail through Loundsley Green Park



Broken line – Off road surface improvements needed

Solid line – On road improvements needed

### Improvements

Resurfacing sections of multi user trail

Signing crossings and direction points for information and safety and improving on road markings

Widening sections of multi user trail

## **Recommendation**

With the improvements outlined in the red boxes above this route would provide active travel route alternatives within the Holme Hall estate to encourage walking, wheeling & cycling for short journeys to local shops, facilities and the primary school. Onward improvements would provide a high quality connection to Chesterfield town centre as well as Chesterfield railway station and interconnecting with leisure routes and opportunities. Cohesive, connected and high quality routes will help to encourage more journeys by foot or bike.